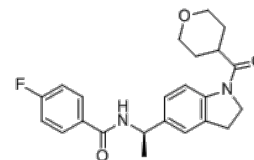


Product Name : LY-3381916
Cat. No. : PC-73168
CAS No. : 2166616-75-5
Molecular Formula : C₂₃H₂₅FN₂O₃
Molecular Weight : 396.45
Target : Indoleamine 2,3-Dioxygenase (IDO)
Solubility : 10 mM in DMSO



Biological Activity

LY-3381916 is a potent, selective and brain-penetrant Indoleamine 2,3-dioxygenase 1 (**IDO1**) inhibitor with IC₅₀ of 7 nM. LY-3381916 displays no significant inhibitory activity against TDO2 (IC₅₀>20 μM), shows no confounding agonism of AHR up to 100 μM.

LY3381916 occupies the heme-binding pocket of IDO1, binds to newly synthesized apo-IDO1 lacking heme, but does not inhibit mature heme-bound IDO1.

LY-3381916 exhibits substantial inhibition of IDO1 in tumors requires the turn-over of mature heme-bound IDO1.

LY-3381916 enhances anti-PD-L1 antibody (LY3300054) activity in pre-clinical tumor model.

References

Frank C. Dorsey, et al. *Cancer Res* (2018) 78 (13_Supplement): 5245.

Caution: Product has not been fully validated for medical applications. Lab Use Only!

E-mail: tech@probechem.com